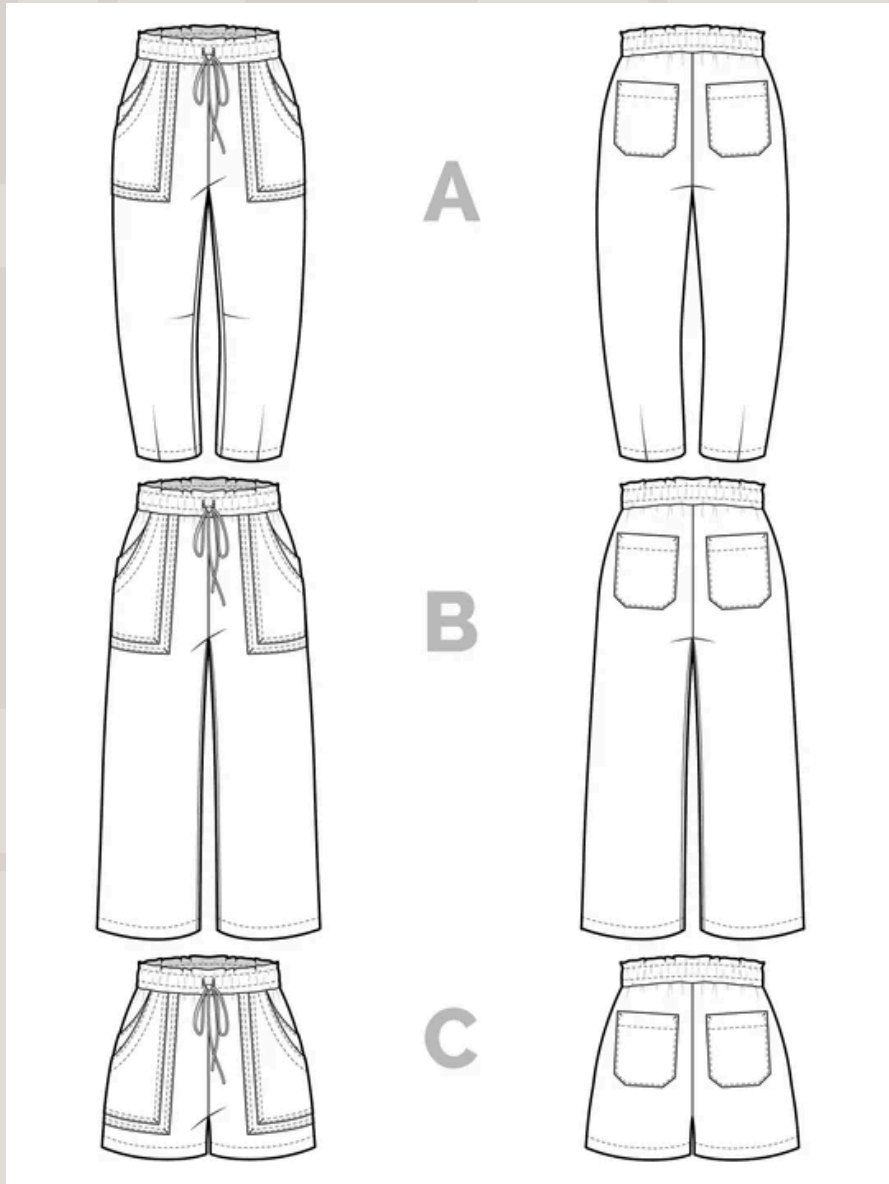




# MAXI SKIRT



ELASTIC WAIST  
NO PATTERN NEEDED  
CHOOSE YOUR LENGTH



# SEPIA PANTS

- View A: barrel leg pants ending at the ankle, shaped with darts at the knee and hem.
- View B: Wide leg, full-length pants.
- View C: Shorts ending at mid-thigh.

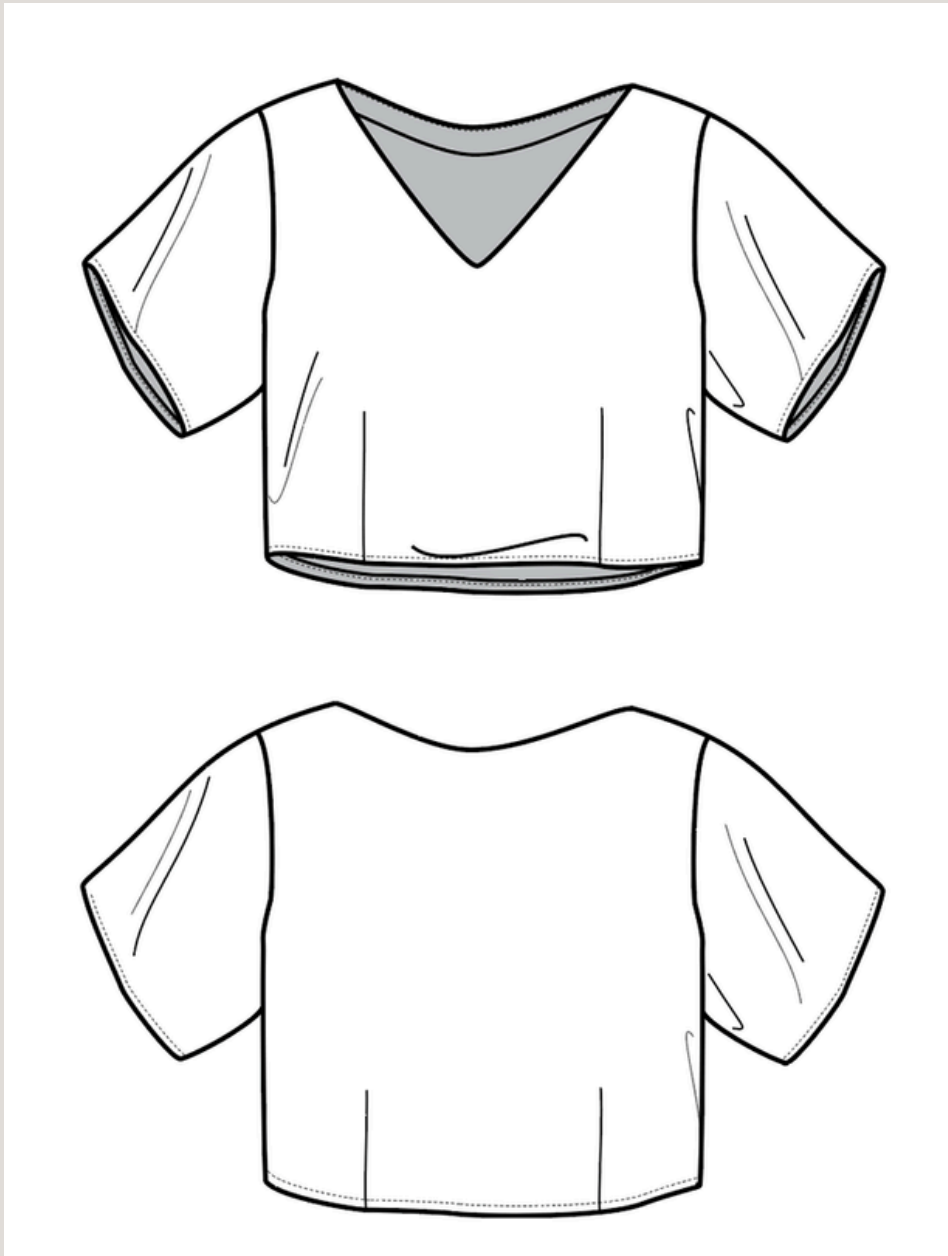


# PJ PANTS

mid-rise  
relaxed straight fit  
In-seam pockets







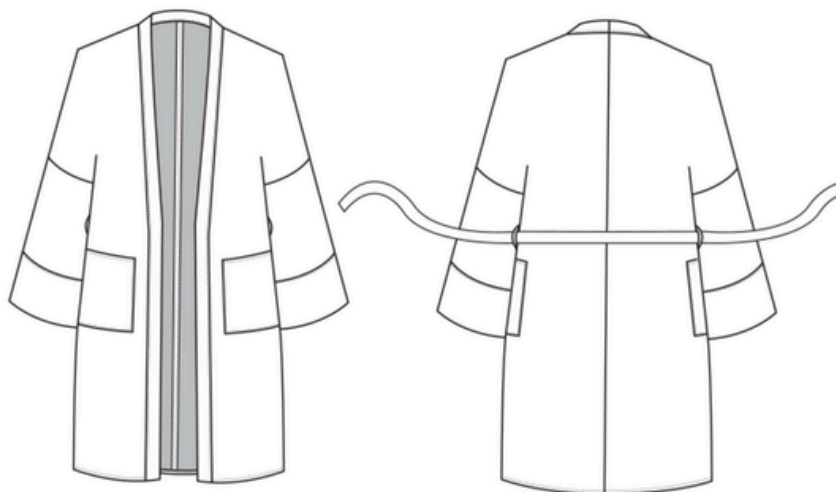
# ADRIA TOP

cropped woven shirt  
relaxed fit  
front and back waist darts.

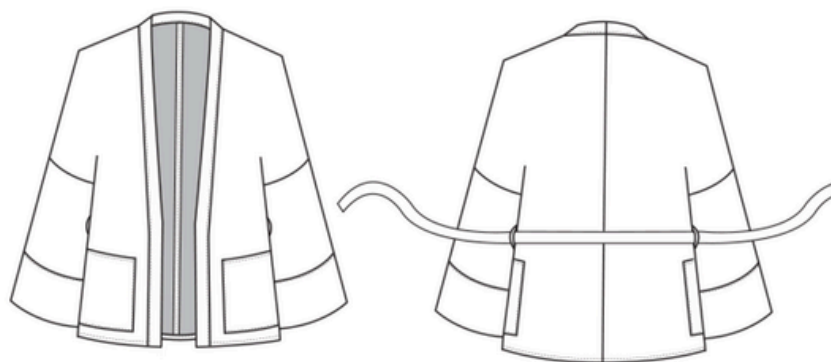




VERSION 01



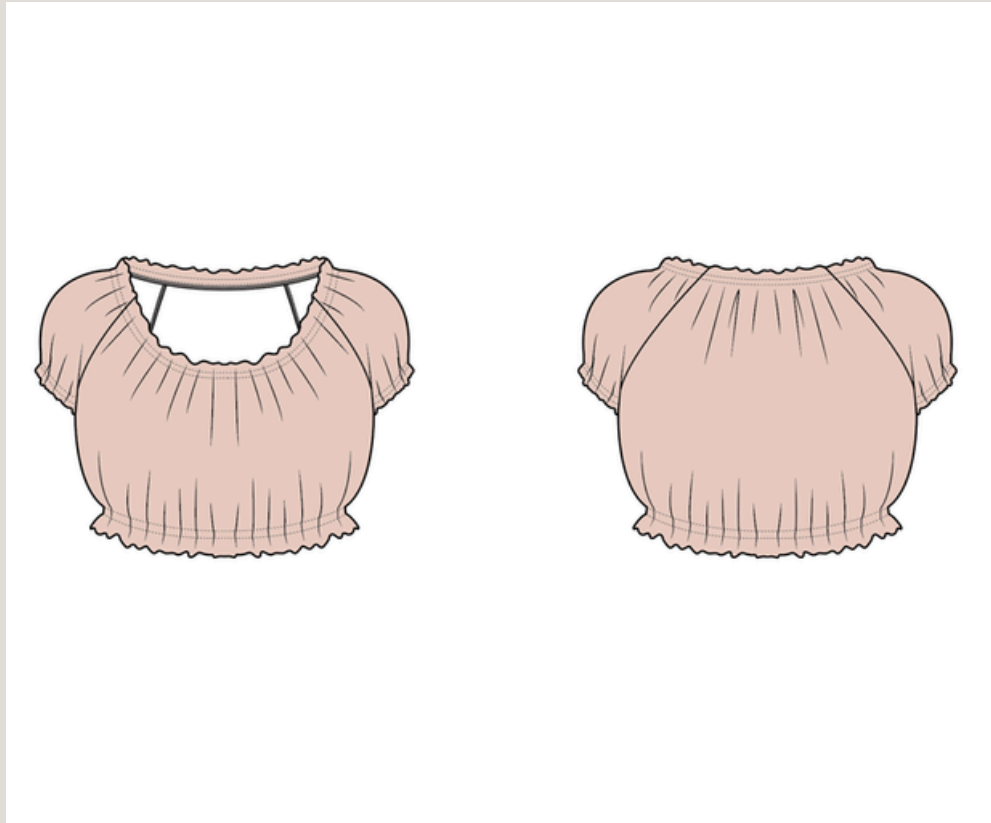
VERSION 02



# QUINCE ROBE

2 Version to choose  
Loose fit  
Waist Tie.





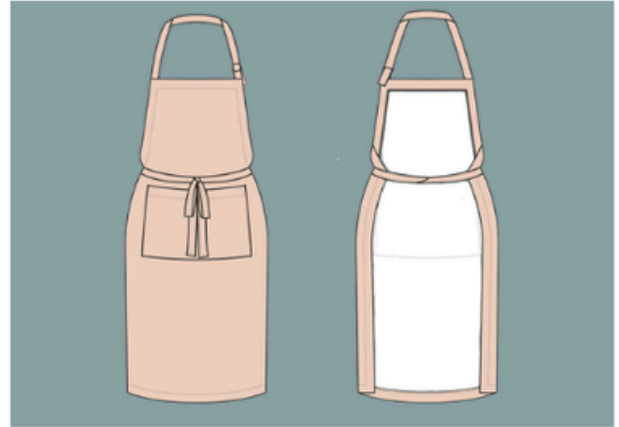
# MADHU CROPPED BLOUSE

cropped Top  
Elastic Fit  
Waist Tie.

# APRON

medium-weight woven fabrics such as:

- Quilting cotton, cotton blends & Linen,
- Avoid slippery fabrics such as silk & Polyester & knits
- Avoid heavy fabric such as denim or wool
- avoid directional fabrics or plaids which will require complicated matching





# FABRIC CHOICE

YOU ARE RESPONSIBLE FOR BRINGING YOUR OWN  
FABRIC TO CLASS

- LIGHTWEIGHT TO MEDIUM-WEIGHT WOVEN FABRICS SUCH AS:  
LAWN, VOILE, LINEN, COTTON BLENDS, RAYON,
- AVOID SLIPPERY FABRICS SUCH AS SILKS & POLYESTER
- AVOID DIRECTIONAL FABRICS OR PLAIDS WHICH WILL REQUIRE  
COMPLICATED MATCHING

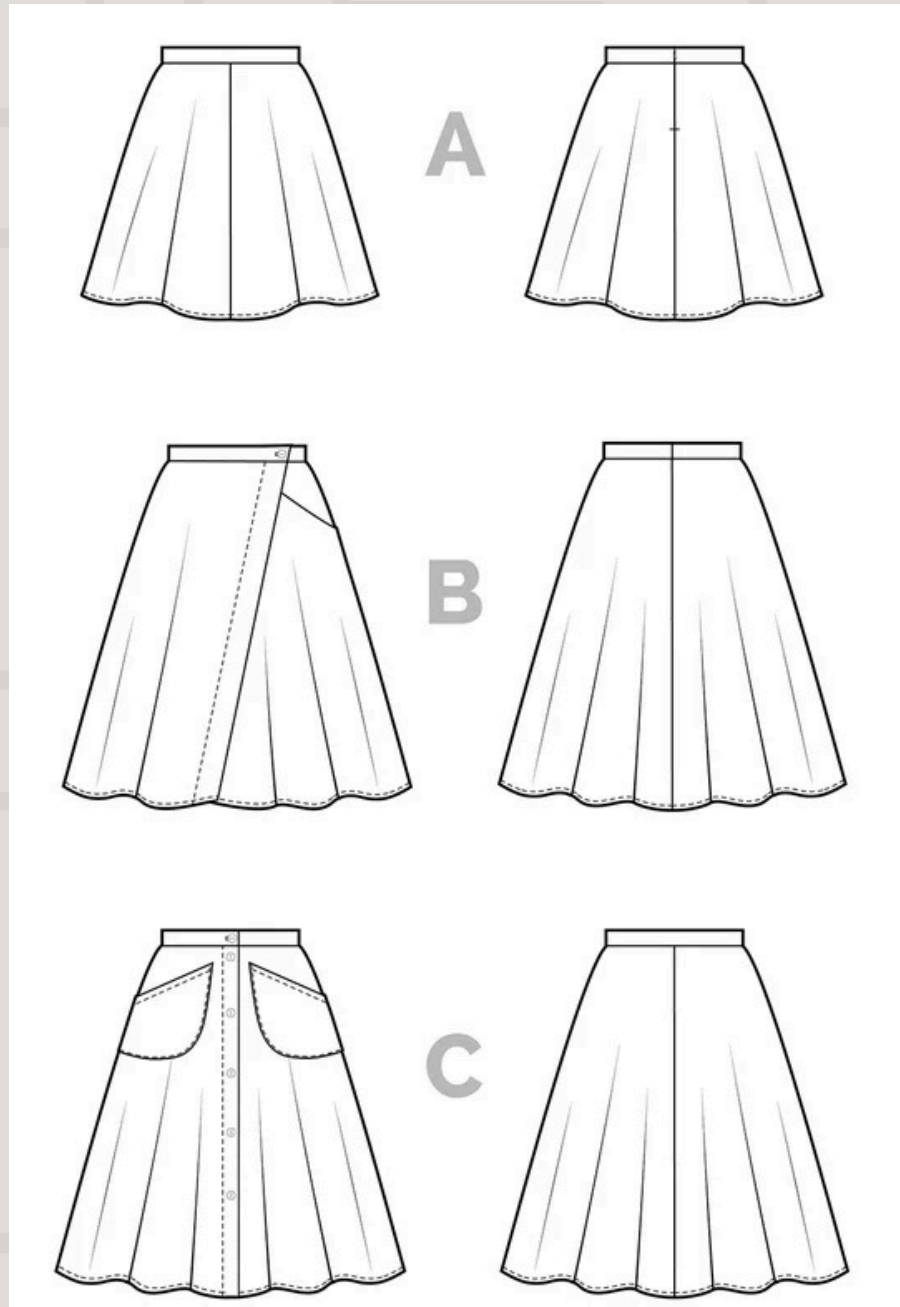
- **CONSIDER THE DESIRED LOOK**

FOR A DRAPEY-LOOK, CHOOSE LIGHTER FABRIC  
(RAYON, LAWN, VOILE)

FOR MORE STRUCTURED LOOK, CHOOSE HEAVIER FABRIC  
MEDIUM-WEIGHT WOVEN, LINEN, QUILTING COTTON)

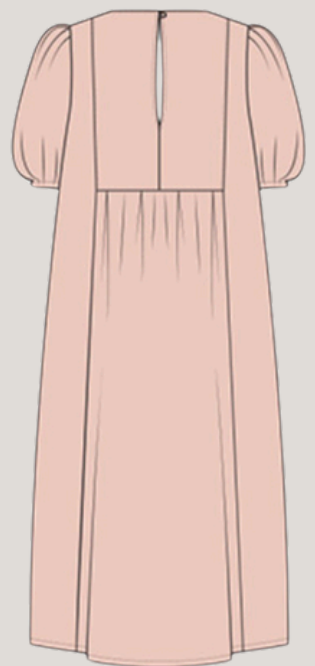
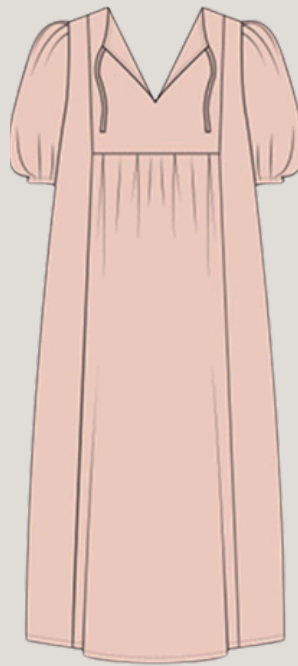
- BELOW ARE A COUPLE OF LOCAL FABRIC STORES.
- ILLUMINATION FINE FABRIC HAS A GREAT SELECTION OF  
GARMENT FABRIC. IT IS LOCATED ON 7TH STREET  
NEARSOUTHSIDE. ALEXIS IS VERY KNOWLEDGEABLE ABOUT  
FABRICS.
- SEW IT UP HAS A SMALLER SELECTION OF GARMENT FABRIC  
BUT AN EXCELLENT SELECTION OF COTTON FABRIC.. THEY ARE  
LOCATED IN COLLEYVILLE. SEW IT UP

\*\* PRE-WASH YOUR FABRIC TO AVOID SHRINKING



# FIORE SKIRT

HIGH-WAIST  
A-LINE SKIRT  
3 STYLE OPTIONS

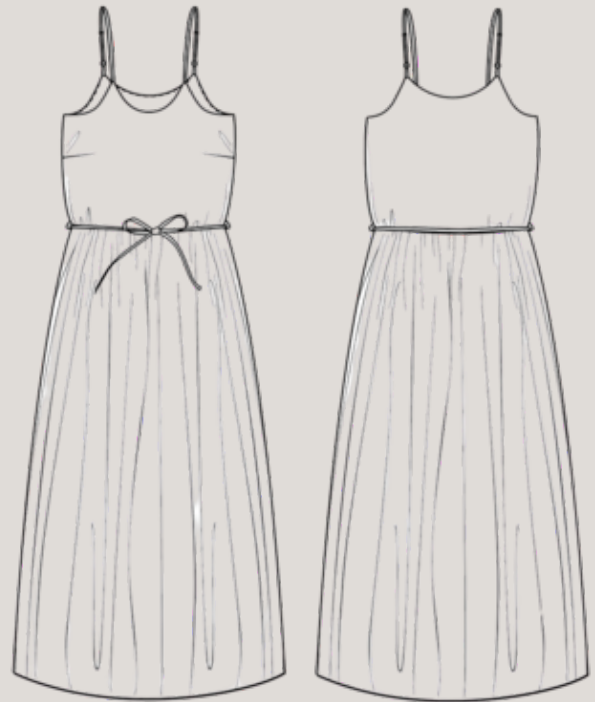


## BAKER DRESS



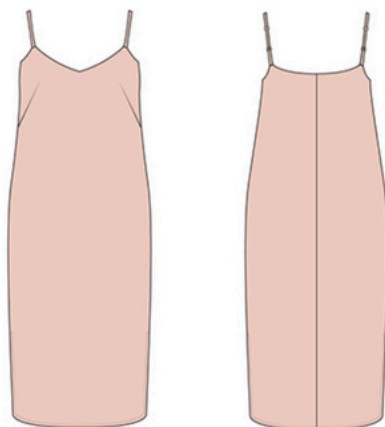
Main Fabric: Light to medium weight woven fabrics such as linen, , batiste, lawn, gauze, double gauze, rayon challis, rayon and Tencel.





## CATARINA DRESS

Main Fabric: Lightweight fabrics with a soft drape such as challis, georgette, crepe de chine, and charmeuse.  
Voile fabrics cotton, polyester, or rayon.



ASH  
SLIP DRESS



Main Fabric: Light to medium weight woven fabrics such as chambray, linen, linen blends, rayon challis, rayon crepe, wool crepe



# MARETT PANTS





Main Fabric: Medium to heavy weight fabrics  
such as denim, canvas, twill,

BUD  
SHACKET



Main Fabric: Medium to heavy weight fabrics  
such as denim, canvas, twill, or Bring an old  
blanket or quilt!!

# QUILTED COAT