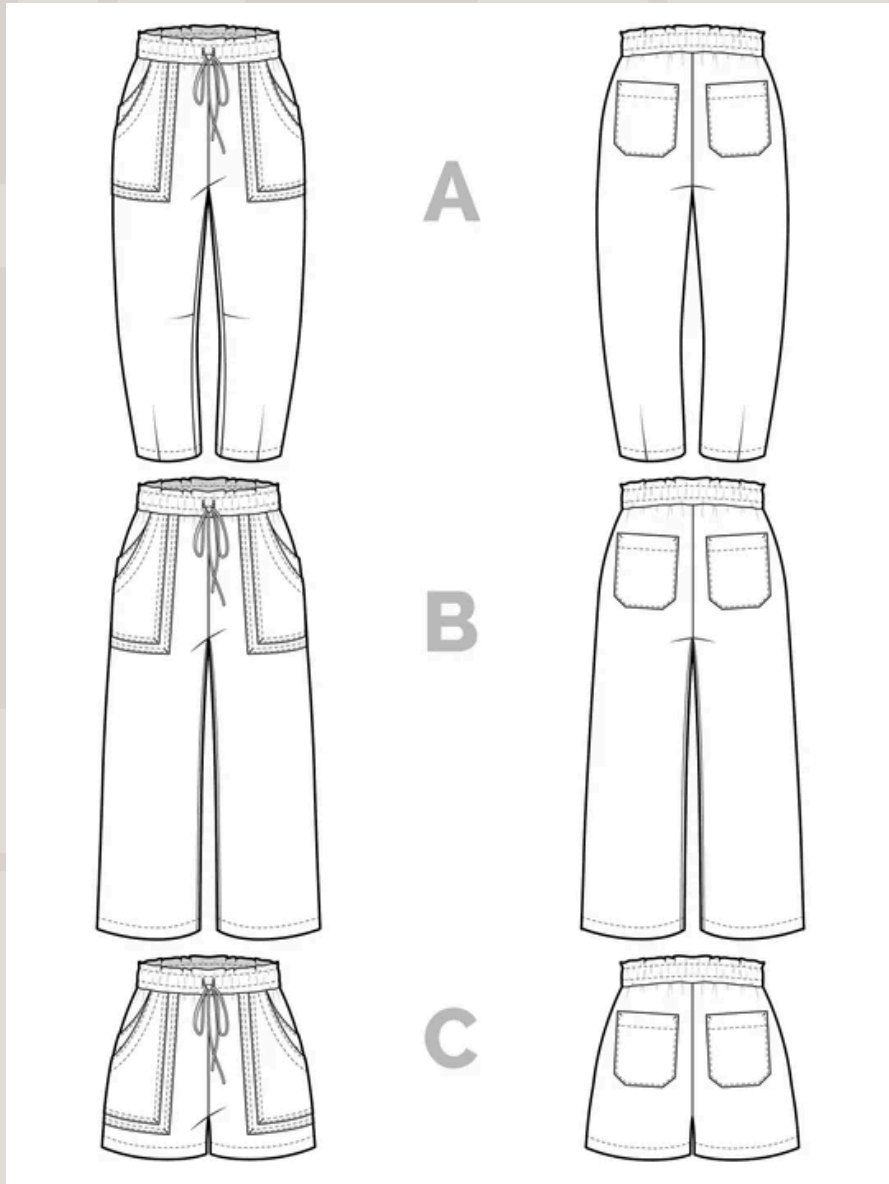




MAXI SKIRT



ELASTIC WAIST
NO PATTERN NEEDED
CHOOSE YOUR LENGTH



SEPIA PANTS

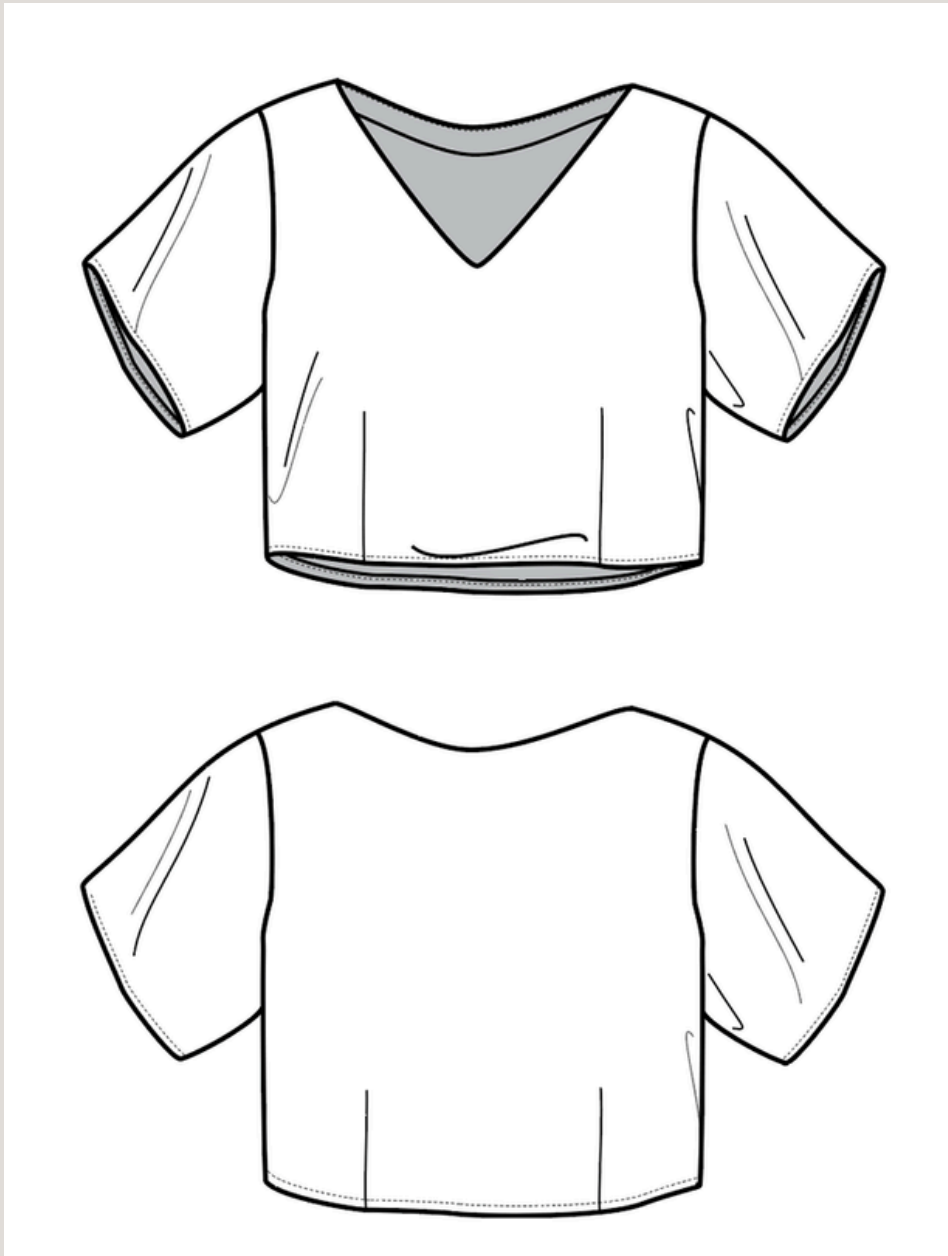
- View A: barrel leg pants ending at the ankle, shaped with darts at the knee and hem.
- View B: Wide leg, full-length pants.
- View C: Shorts ending at mid-thigh.



PJ PANTS

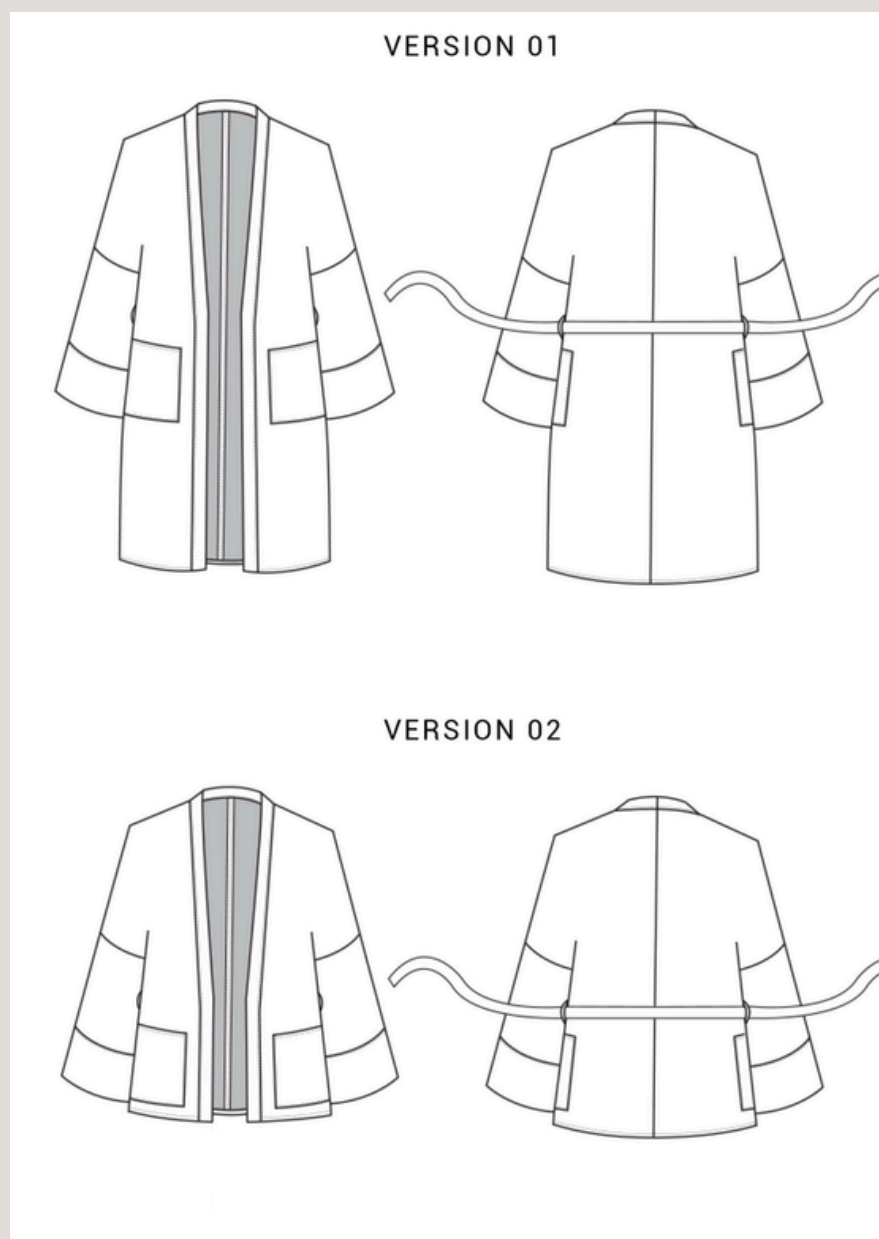
mid-rise
relaxed straight fit
In-seam pockets





ADRIA TOP

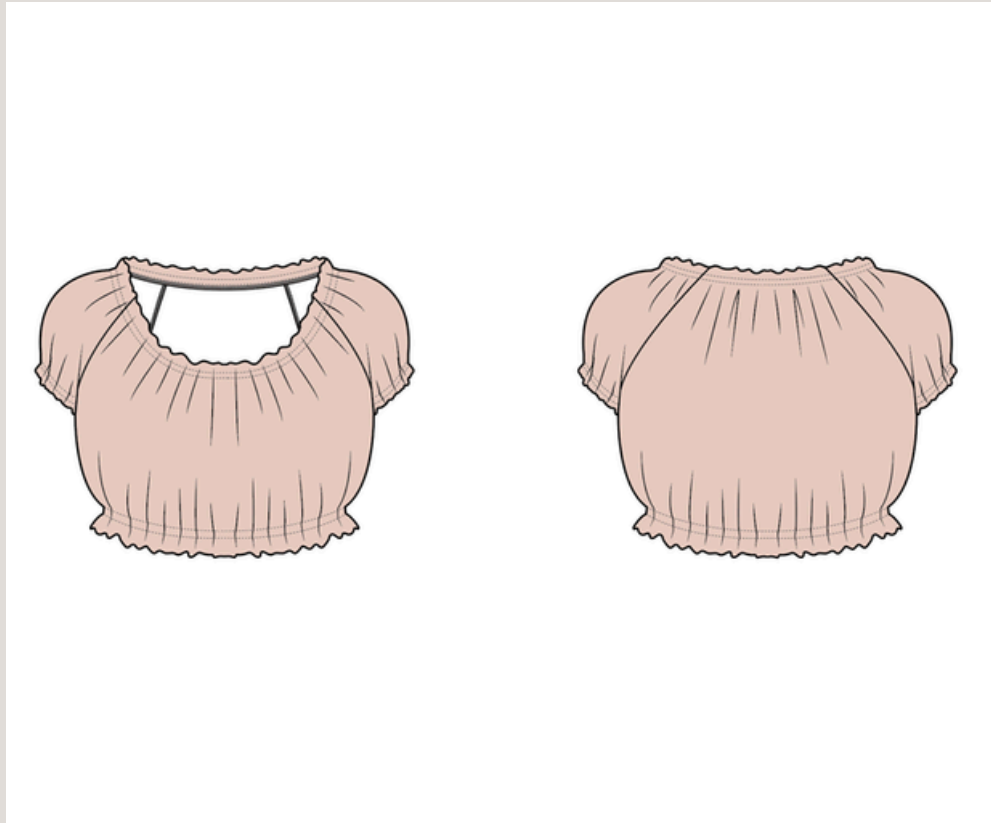
cropped woven shirt
relaxed fit
front and back waist darts.



QUINCE ROBE

2 Version to choose
Loose fit
Waist Tie.





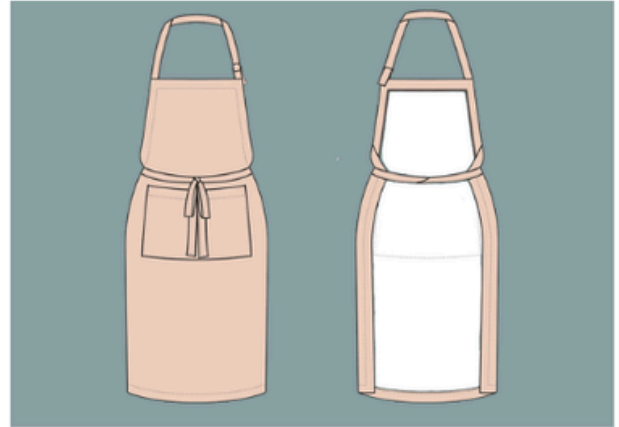
MADHU CROPPED BLOUSE

cropped Top
Elastic Fit
Waist Tie.

APRON

medium-weight woven fabrics such as:

- Quilting cotton, cotton blends & Linen,
- Avoid slippery fabrics such as silk & Polyester & knits
- Avoid heavy fabric such as denim or wool
- avoid directional fabrics or plaids which will require complicated matching



FABRIC CHOICE

YOU ARE RESPONSIBLE FOR BRINGING YOUR OWN
FABRIC TO CLASS

- LIGHTWEIGHT TO MEDIUM-WEIGHT WOVEN FABRICS SUCH AS:
LAWN, VOILE, LINEN, COTTON BLENDS, RAYON,
- AVOID SLIPPERY FABRICS SUCH AS SILKS & POLYESTER
- AVOID DIRECTIONAL FABRICS OR PLAIDS WHICH WILL REQUIRE
COMPLICATED MATCHING

- **CONSIDER THE DESIRED LOOK**

FOR A DRAPEY-LOOK, CHOOSE LIGHTER FABRIC
(RAYON, LAWN, VOILE)

FOR MORE STRUCTURED LOOK, CHOOSE HEAVIER FABRIC
MEDIUM-WEIGHT WOVEN, LINEN, QUILTING COTTON)

- BELOW ARE A COUPLE OF LOCAL FABRIC STORES.
- ILLUMINATION FINE FABRIC HAS A GREAT SELECTION OF
GARMENT FABRIC. IT IS LOCATED ON 7TH STREET
NEARSOUTHSIDE. ALEXIS IS VERY KNOWLEDGEABLE ABOUT
FABRICS.
- SEW IT UP HAS A SMALLER SELECTION OF GARMENT FABRIC
BUT AN EXCELLENT SELECTION OF COTTON FABRIC.. THEY ARE
LOCATED IN COLLEYVILLE. SEW IT UP

** PRE-WASH YOUR FABRIC TO AVOID SHRINKING